



# GAT MONTHLY MEMBERSHIP PROGRESS REPORT

Results as of: 1/31/2021

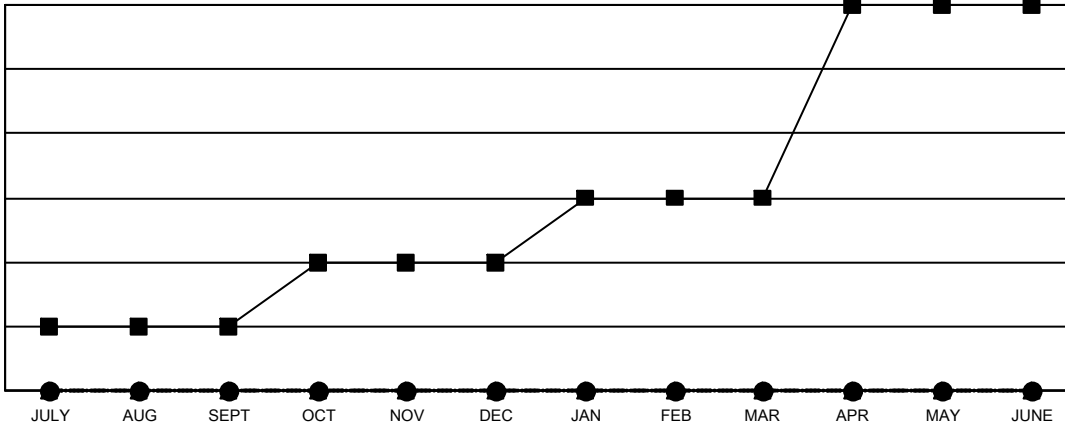
Multiple District 38

LOCATION: NEBRASKA

Clubs			
RESULTS FOR 2020-2021			
QUARTER	NEW CLUB GOAL	NEW CLUBS	DROPPED CLUBS
JULY/AUG/SEPT	1	0	0
OCT/NOV/DEC	1	0	3
JAN/FEB/MAR	1	0	0
APR/MAY/JUNE	3	0	0

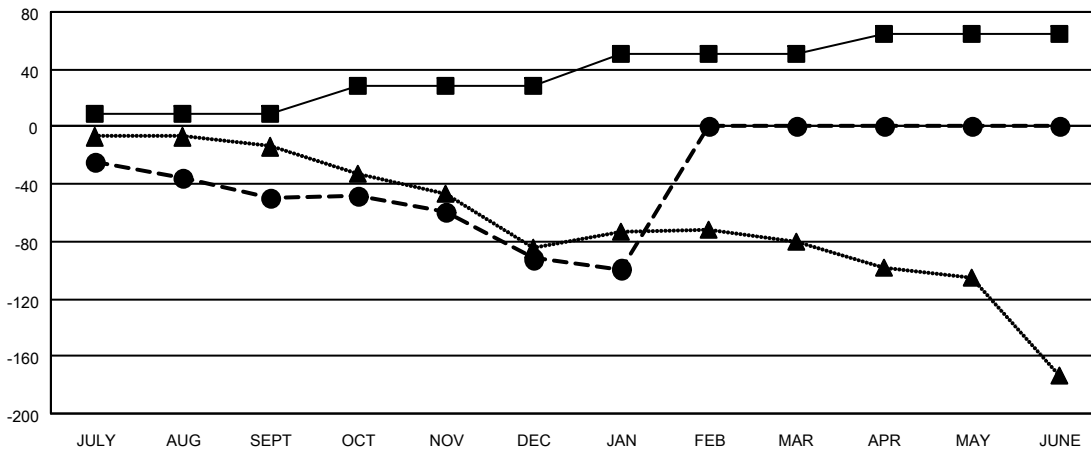
Members			
RESULTS FOR 2020-2021			
QUARTER	MEMBER GROWTH NET GOAL	MEMBER GROWTH ACTUAL	DROPPED MEMBERS ACTUAL (including transfers)
JULY/AUG/SEPT	9	32	76
OCT/NOV/DEC	19	44	82
JAN/FEB/MAR	23	4	10
APR/MAY/JUNE	14	0	0

GOALS AND ACTUAL NEW CLUBS CUMULATIVE



- - CURRENT YEAR GOALS FOR NEW CLUBS
- - CURRENT YEAR ACTUAL NEW CLUBS
- ▲ - LAST YEAR ACTUAL NEW CLUBS

GOALS AND ACTUAL MEMBERS CUMULATIVE



- - MEMBER GROWTH NET GOAL
- - MEMBER GROWTH ACTUAL
- ▲ - LAST YEAR MEMBERSHIP ACTUAL

DROPPED CLUBS: 3	
<u>DROPPED MEMBERS</u>	
DECEASED	30
CLUB CANCELLED	18
OTHER	120
<b>TOTAL</b>	<b>168</b>

36 CLUBS OF 127 ADDED 1 OR MORE NEW MEMBERS

[CLICK HERE FOR CUMULATIVE MEMBERSHIP DATA](#)

<u>GENDER DISTRIBUTION</u>	
MALE	2,245 (73.29%)
FEMALE	818 (26.71%)
TOTAL FAMILY UNIT MEMBERS	637
FAMILY MEMBERS PAYING HALF DUES	323